

Mission: Hanham Woods will give people the **best** chance of **success**...

Academic outcomes

Character development

Year 11 Steps to Success

Name: Josh Hocking

Role: AAP (Raising Standards) and Head of Maths

Date: Thursday 26th September



The Year 11 Team

Mr Hocking
Year 11 Academic Lead



Mr Tucker
Year 11 Coordinator



Mrs Thorne
Year 11 Pastoral Lead



Miss Mujkic
Careers Lead



Based in S8

Year 11 – The Tutors

11A – Mrs Heynes / Mrs Morgan – Patel

11B – Mr Tucker

11C – Miss McGinnes

11D – Mr Ryan / Mrs Owens

11E – Mrs Weatherall

11F – Miss Simmonds

Culture is everything!

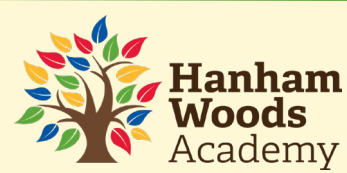


PRIORITY

What makes you stand out?



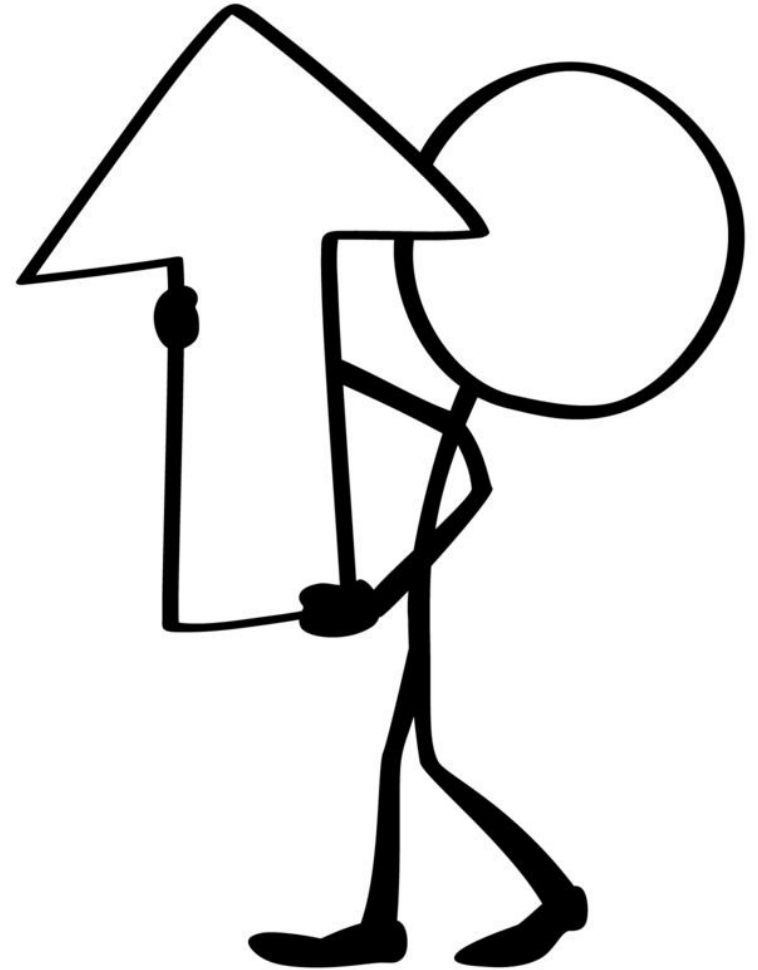
600,000 Year 11
Students



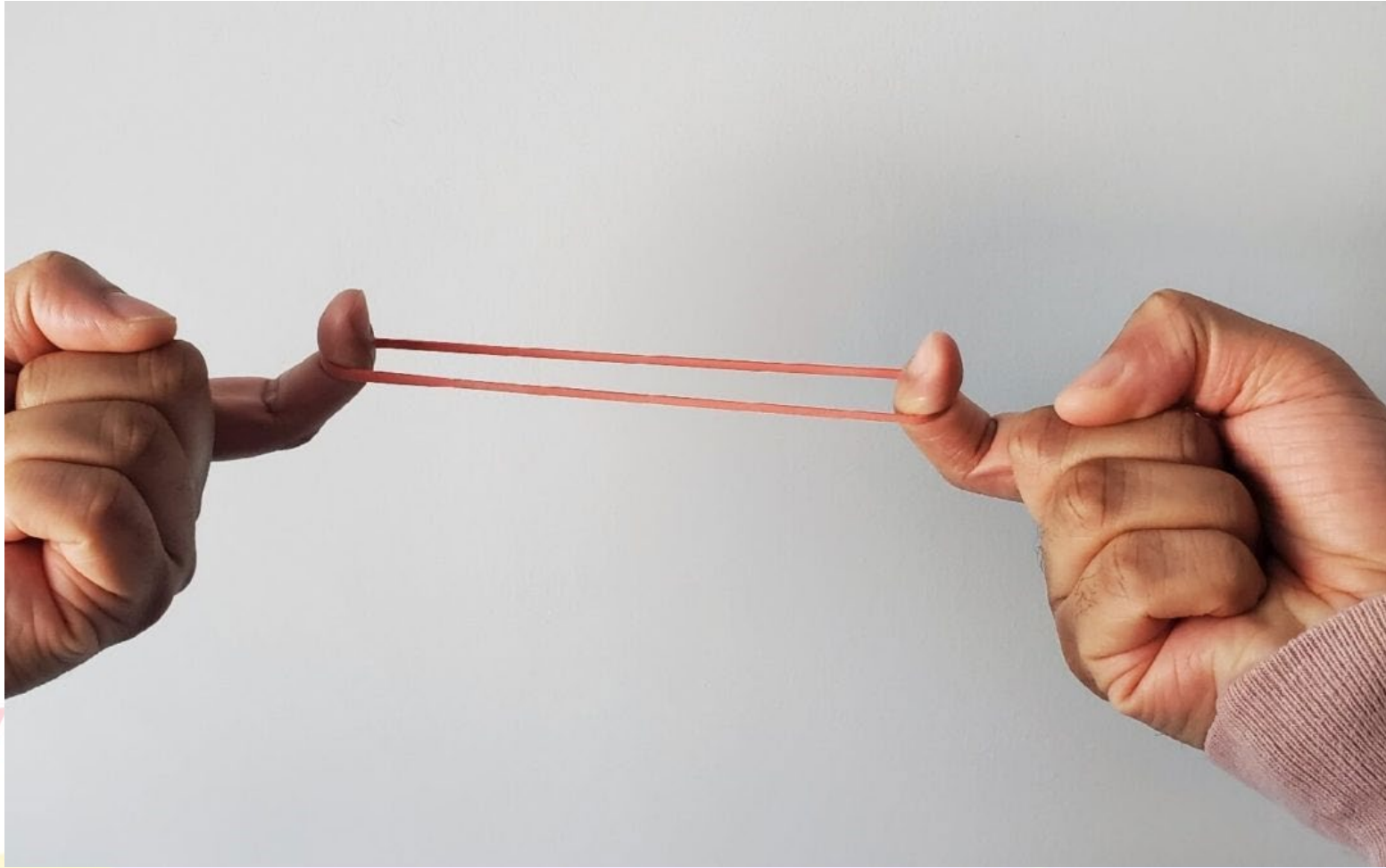
Dream BIG // Work Hard // Be Kind



Aim High. Don't settle.



Are you stretching yourself?



Be a role model.

Set the tone. Set the standard.



Y11 Key Dates

Event	Date
PPE 1	22nd October – 15th November
Parents evening 1	5 th December
PPE 2	10th February – 7th March
Parents evening 2	27 th March
GCSEs begin	5th May
Leavers Event	20 th June
Prom	3 rd July
GCSE Results	21st August



After Academy Intervention

- 3pm – 3:45pm targeted intervention on key curriculum areas
- High impact in a supportive atmosphere
- **All** students are welcome
- Parental support gives students the best chance of success
- Intervention supplements independent revision. It does not replace it!

Week 1	Monday	Tuesday	Wednesday	Thursday	Friday
	Computer science	Photography		Health and social	Drama
	Sociology	MFL		History	Sports sci
	Music	Geography		DT	
Week 2	Monday	Tuesday	Wednesday	Thursday	Friday
	Maths	Science		English	

Y11 Homework

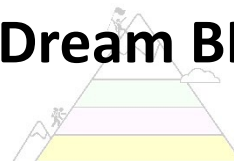
Subject	Due on:
Science and Option D	Monday
English and Option A	Tuesday
Maths and Option C	Wednesday
Option B	Thursday

- Homework is set via Show my Homework (Satchel One)
- Staggered hand in to spread workload evenly
- Paper copies are available
- Please let us know if ICT/Internet access is an issue for your child

Purposeful Tutor Time offer



Monday	Assembly
Tuesday	English Language intervention
Wednesday	Morning Meeting / Revision
Thursday	Morning Meeting / Revision
Friday	Careers / Quiz / Wellbeing



High Performance Folders

A great place to collate revision materials and construct a personalised revision timetable

All students are expected to have this in their bag every day.



Revision W1 Timetable

EXAMPLE

Name: _____

Day	Saturday	Sunday	Monday	Tuesday	Wednesday	Thursday	Friday
9:00 – 10:00		Day off		Day off			
10:00 – 11:00	Maths revision quizzes pages 1-10 (30mins)						
11:00 – 12:00						Art catch up coursework	
12:00 – 13:00							
13:00 – 14:00	Hegarty-lesson 24 2x30 mins)		Science revision pages 1-20 (1 hour)				
14:00 – 15:00			Spanish Seneca (30 mins)				Art catch up
15:00 – 16:00	Business revision paper 1 timed (1 hour)		PE Mock paper 1 in timed conditions (1 hour)		Maths revision drills algebra Pages 21-30 (30 mins)		Science Kerboodle revision quiz (30 mins)
16:00-17:00	English Macbeth self quiz (30 mins)		English Macbeth exam question (45mins)		Spanish Mock exam writing section		Science Biology unit 1 mock paper (1 hr)
17:00-18:00					English Paper 1 Timed Section A (1 hour)		
18:00 – 19:00							
19:00-20:00							
20:00-21:00							



What makes for impactful revision?

Have a clear schedule and plan of what and when to revise. (Some subjects have more urgent coursework dates and so schedules need to be flexible)

Each revision slot should last around 25/30 minute chunks and should consist of the following three options:

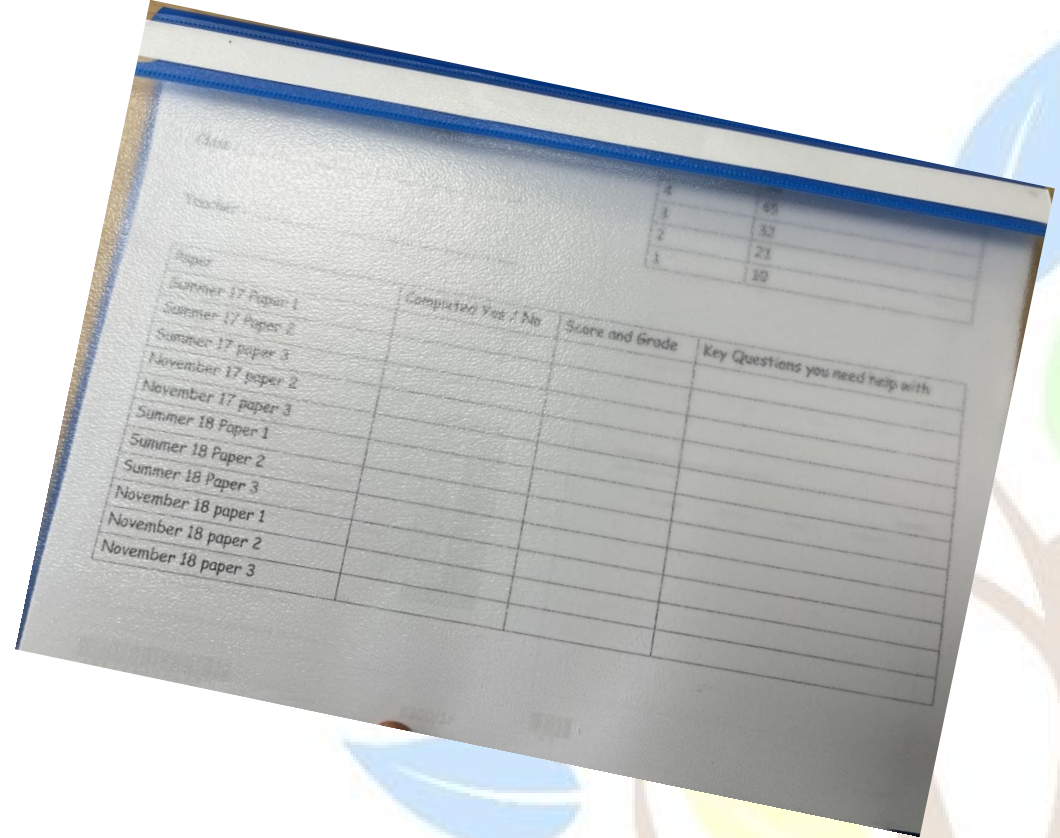
1. **Self-quizzing:** look - write - cover - check, or writing quiz questions based on knowledge you need to learn.
2. **Exam drills and practice questions.** You should aim to complete at least 1 timed mock paper/question at home for every subject you have an exam for so some slots might have to be longer than 25/30 minutes.
3. **Use of online revision platforms such as Seneca, Bitesize, Sparx** (extra to set homework)

If you have outstanding coursework/NEA work you could also spend one of your three sessions on completing assignments or coursework

Maths

The Sparx logo is written in a bold, white, sans-serif font on a dark blue rectangular background.

1 hour per week



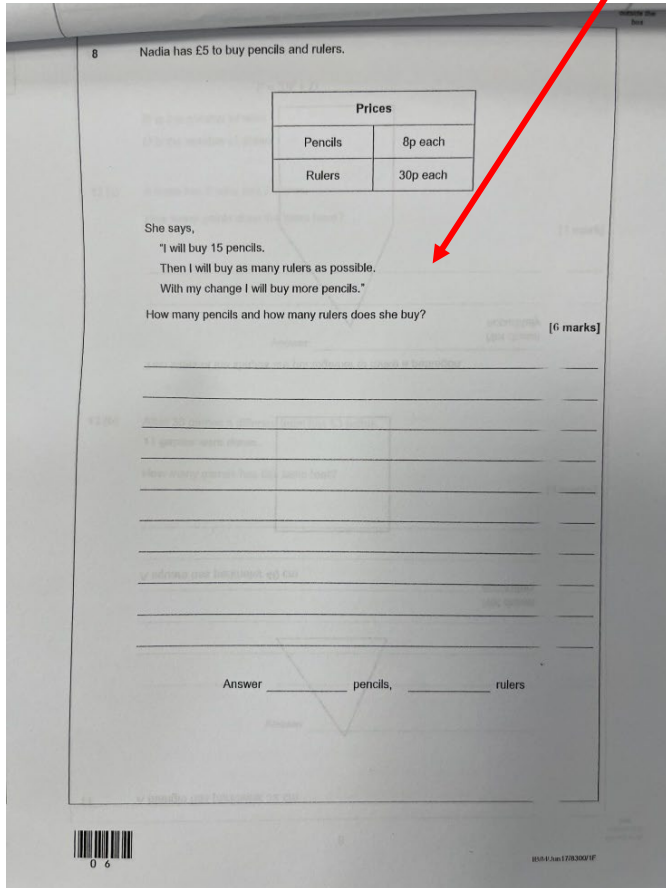
The pack contains 12 past exam papers with 12 worked answers to help you check and mark your work. Video solutions are also added to Satchel One



How to use the pack most effectively

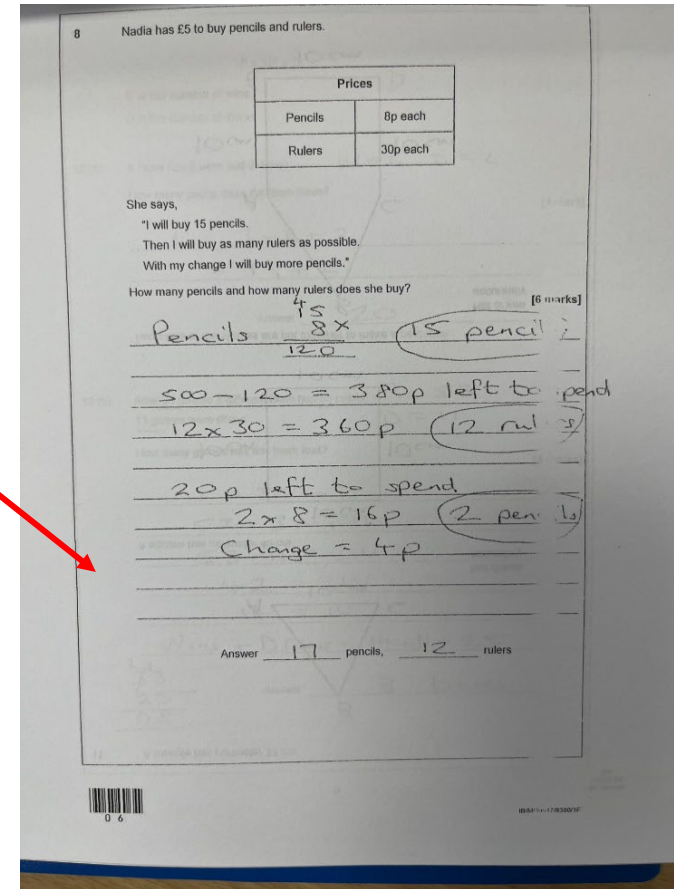
Stage 1

Answer each question to the best of your ability. Do the paper in a distraction free environment!



Stage 2

Once completed, use the worked answers located at the end of each paper to help you mark your work.



Stage 3

Use the video solutions (posted on SMHW) to help guide you through each question. Rewatch as many times as you like!

<https://www.youtube.com/watch?v=BdLm44xM4oU>

Paper 2 (calculator)

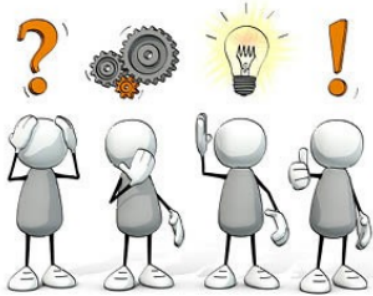
You scored **32 out of 80** on Paper 2. The national average for this paper was 41 out of 80.

Qn	Topic	% of marks you gained	% of marks nationally	Sparx Clip	
1	Algebraic terminology	0			
2	Hours and minutes	100		U902	
3(a)	Mixed number conversion	100	57	U692	
3(b)	Fraction to decimal, rounding	100	65	U888	
3(c)	Rounding	100	59	U298	
4	Hiring problem	100	83	U721	
5	Drawing quadrilateral	33	64	U121	
6	Range problem	0	43	U526, U388	
7(a)	Time problem	100	80	U902	
7(b)	Mistake	100	76	U976	
8(a)	Coordinates	100	83	U789	
8(b)	Coordinates	100	82	U933	
8(c)	Coordinates	0	54	U889	
8(d)	Equation of line	0	7	M797	
9(a)	Fractions assumption problem	0	50	U916	
9(b)	Assumption	100	73	U916	
10(a)	Number problem	100	84	U211	

Purchasing revision guides

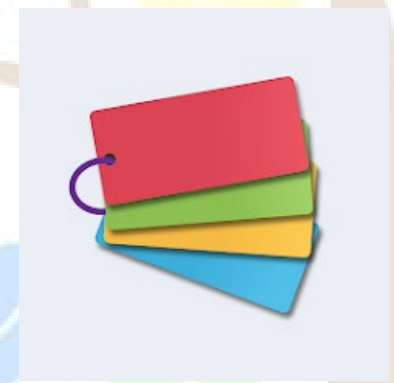


GCSE Revision Book Catalogue 2024-25



Year 11

For Summer Examinations in 2025



Dream BIG // Work Hard // Be Kind



@HanhamWoods

Messages

- Your session has expired. Please login again to continue.



LOGIN

Email Address

Password

LOGIN

Don't have an account yet? [Register as a new user](#)

[I've forgotten my password](#)

[Lost Property](#)

LET'S
GET
STARTED.

WANT SCOPAY FOR YOUR SCHOOL?



How can you best support your child and HWA through year 11?



- Work in partnership with us to help your child to meet expectations inside the Academy
- Read communications; knowledge is power!
- Support your child to maintain routines at home
- Ensure that dedicated revision time is focused, calm and deliberate. (Phone free)

Supporting Year 11 with next steps....



Assembly - External Providers



ST BRENDAN'S
SIXTH FORM COLLEGE



CABOT
LEARNING
FEDERATION



boomsatsuma



CITY *of*
BRISTOL
COLLEGE

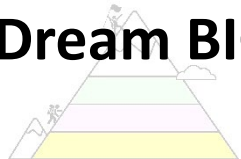


**Hanham
Woods**
Academy



Cabot
Learning
Federation

Dream BIG // Work Hard // Be Kind



@HanhamWoods

Welcome to CLF Post 16 Briefing 2024

CLF CORE PURPOSE



Maintain **High expectations** in all we do, ambitious for ourselves, our communities, and our environment.



Create **Equity** of opportunity, promoting inclusion, removing disadvantage and rejecting discrimination.



Champion the success and life chances of **All children**.



Furnish pupils and staff with the **Resilience** to succeed as lifelong learners.



Harness our **Togetherness** to achieve more, collaborating proactively in seamless unity.

P16 VALUES



We **CARE** about you



We **BELIEVE** in you



We **ACHIEVE** with you



Cabot
Learning
Federation



CABOT
LEARNING
FEDERATION **POST16**



Options for our students – Curriculum Change

Level 3
A Levels

- A levels – 2 Year course – exams summer 2027
- Vocational Course- 2 yr course – Coursework / exams

Level 3
T Levels

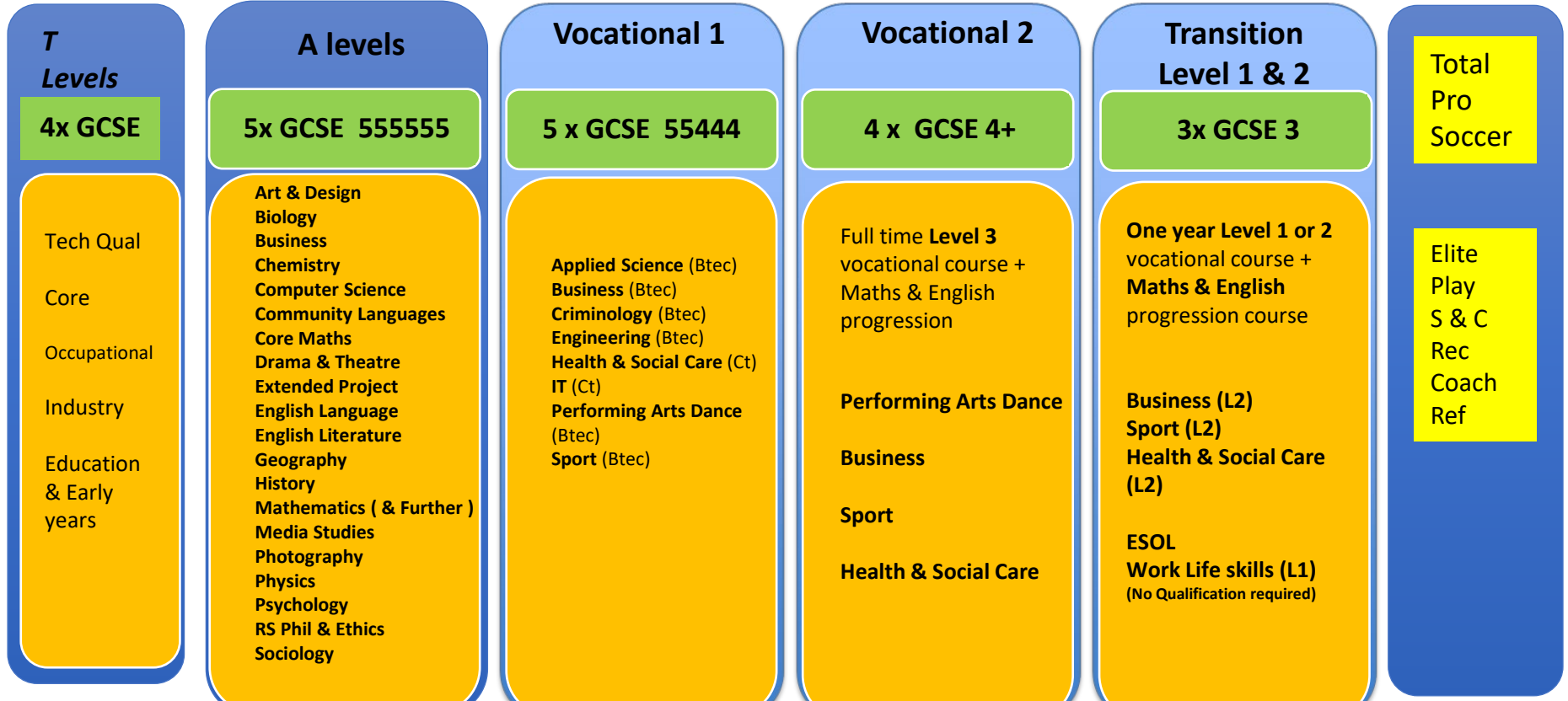
- Level 3 Technical Qualification
- Occupational Learning
- Industry Placement 100 hours

Apprenticeships

- Work related training
- Compulsory Training programme – 1 day release
- Level 2,3,4,5



Academic Progression Routes



Apprenticeships

<https://www.gov.uk/apply-apprenticeship>



Cabot
Learning
Federation



OST16



@clfp16

T LEVEL ROLLOUT 2025 Start

AGRICULTURE, ENVIRONMENTAL AND ANIMAL CARE ROUTE	BUSINESS AND ADMINISTRATIVE ROUTE	CATERING AND HOSPITALITY ROUTE	CONSTRUCTION	CREATIVE AND DESIGN ROUTE	
Agriculture, Land Management and Production	Human Resources replaced by Sales, marketing and procurement	Catering (deferred to beyond 2024)	Building Services Engineering for Construction	Craft and Design (deferred 2024)	
Animal Care and Management	Management and Administration		Design, Surveying and Planning for Construction	Media, Broadcast and Production (deferred 2024)	
			Onsite Construction		
DIGITAL ROUTE	EDUCATION AND CHILDCARE ROUTE	ENGINEERING & MANUFACTURING ROUTE	HAIR AND BEAUTY ROUTE	HEALTH AND SCIENCE ROUTE	LEGAL, FINANCE & ACCOUNTING ROUTE
Digital Business Services	Education and Early Years	Engineering and Manufacturing Design and Development	Hair, Beauty and Aesthetics (deferred 2024)	Health	Accounting
Digital Production, Design and Development		Maintenance, Installation and Repair for Engineering and Manufacturing		Healthcare Science	Finance
Digital Support Services		Engineering, Manufacturing, Processing and Control		Science	Legal Services

Bristol Providers



Bristol Post-16 Directory
Courses starting Sept 2025

Cabot Learning Federation Post-16

Senior Leader Post16: **Kath Cooper**
 SEN Lead: **Lana Crosbie**
 Children in Care Lead: **Lana Crosbie**
 Enquiries/Applications for Post 16 should be completed via website links (www.clfpost16.org) or Applica '25 link live in October. info@clfpost16.org
 Website: www.post16.cfb.uk
 Phone: 0117 988 2525

The Cabot Learning Federation Post 16 is an independent provision hosted by John Cabot Academy. We offer high quality facilities including a new dedicated Post 16 building and access to the latest subject technologies (e.g. a state-of-the-art Design Centre and sports complex). We offer an inclusive and broad programme offer for students, across a full range of A level and Vocational qualifications.

We have a strong commitment to our anti racism thread that will run through our curriculum offer, practices and policies. The Cabot Learning Federation Post 16 has committed to an ongoing process of individual and collective education, discussion, and action to engender belonging and identity for all the communities we serve.

Our committed professional team of subject experts are leading practitioners and experienced in delivering first class teaching, guidance and support. Our wider curriculum is valued and prepares young people for aspiring futures and careers.

We provide exemplary pastoral support through a dedicated team that remove the barriers for students, alongside a commitment to inclusivity through our specialist Inclusion team.

Our greatest strength is the unwavering ambition we hold for all students across all

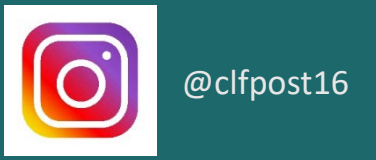
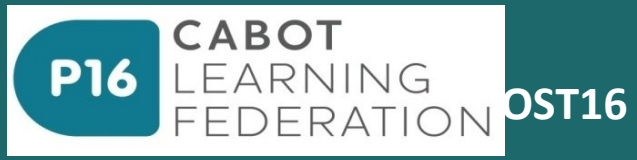
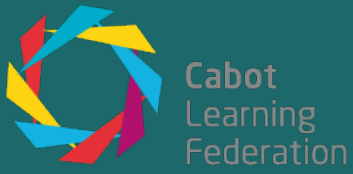
prior attainment stages, setting the highest of expectations whilst maintaining strong standards. This is reflected each year in our students' progress, with students achieving on average half a grade higher than their target grades and reaching their potential and beyond.

General entry requirements:
 Level 3 - A Level route requires a minimum of 6 GCSE at grades 5.5,5.5,5.5 with a level 4 in both Maths and English. Refer to the individual subject pages on our website for any subject specific entry requirements to each course.
 Level 3 - Vocational route requires a minimum of 6 GCSE at grades 5.5,4.4,4.4 with a minimum level 4 in both Maths and English.
 Level 3 - Specialist Vocational (Double or Triple Award) route requires a minimum of 5 x GCSE grade 4 including Grade 4 in English Lang or Lit. Maths GCSE at Grade 2 or above. (See Course Level Routes Explained on our website for further details on Specialist routes)
 Level 2 - Specialist Transition route requires a minimum of 3 x GCSE grade 2 or above. (However, students not achieving this will be considered on meeting with admissions team)
 Level 1 - Vocational & Work - no formal qualifications. Meeting with admissions team to access suitability for course.
 Level 1/2 - ESOL (English for Speakers of Other Languages) - no formal qualifications. Meeting with admissions team to access suitability for course.

*Please refer to the individual subject pages on our website for any subject specific entry requirements to each course.

Open events:
 Tuesday 22 October 2024 (16:30 - 19:30)
 Tuesday 27 February 2025 (16:30 - 19:30)

<https://www.bristol.gov.uk/files/documents/8172-bristol-post-16-directory-2025/file>





CLF Post 16
Personalised
Bespoke
Hosted @ JCA -
Your Local Sixth
Form



CLF Post 16 Website



ENROLMENT
[FIND OUT MORE ↗](#)

SUMMER TASKS
[FIND OUT MORE ↗](#)



A-Z of Courses
Business Studies (BTEC Extended Certificate)
BTEC Extended Certificate
[Learn More](#)



Business Transition (Level 3)
Cambridge Technical Extended Certificate/Diploma
[Learn More](#)

[APPLY NOW ↗](#)

C



Chemistry
A Level



Community Languages
AS and A Levels



Computer Science
A Level

<https://post16.clf.uk/>



@clfpost16



P16 CABOT
LEARNING
FEDERATION

Your future
starts here...



CLF Post 16 Open Evening

Tuesday 22nd October 2024 4.30- 7.30pm

- ✓ Find out more about the Post 16 experience
- ✓ Explore our courses
- ✓ Meet the teachers
- ✓ Take a tour
- ✓ See what CLF Post 16 can offer you!

Booking is essential:

Visit www.post16.clf.uk/open-event to book your place.



P16 CABOT
LEARNING
FEDERATION

Your future
starts here...



CLF Post 16 Information Evening

Tuesday 30th January 2025 4.30- 6.30 pm

- ✓ Find out more about the Post 16 experience
- ✓ Explore our courses
- ✓ Meet the teachers
- ✓ Take a tour
- ✓ See what CLF Post 16 can offer you!

Booking is essential:

Visit www.post16.clf.uk/open-event to book your place.



Open Days and Evenings

St Brendan's	Open Day – Saturday 5 th October Open Evenings – Wednesday 16 th October, Thursday 14 th November and Tuesday 4 th February
CLF Post 16	Open Evening – Tuesday 22 nd October
Boomsatsuma	Week of 21 st October and 16 th December
City of Bristol College	Open Day – Saturday 5 th October and 18 th January Open Evening – 21 st November and 12 th March
SGS College	Open Evening 26 th September and 12 th October
St Mary Redcliffe	Open Evening – 17 th October and 6 th November
Weston College	Open Evening – 9 th October
Robins Foundation	Open Evening – 1 st October and 11 th November

The National Apprenticeship Show

THE NATIONAL
APPRENTICESHIP
SHOW
WEST
ASHTON GATE, BRISTOL

Tuesday 8th October at Ashton Gate

Letter sent home

£4 payment via Scopay

FEATURING
UNIVERSITY
FEST

PROUDLY SUPPORTED BY



ROBINS
FOUNDATION

SCOPAY



Dream BIG // Work Hard // Be Kind



@HanhamWoods

Careers meetings and guidance



Miss Mujkic
Careers Lead

Two 1 to 1 meetings throughout the year alongside ongoing next steps guidance through the tutor programme and assemblies.

We want students to make informed choices that are appropriate for them!

Supporting teen anxiety

- Parents are often in a better position than therapists to put strategies in place and create opportunities for new learning in their child's day-to-day life
- Parents can sometimes put strategies in place across the family
- Parents are likely to remember what has been helpful in months and years to come and so can put strategies in place again if needed
- Social, academic and body anxiety are all relatively common. It is important not to diagnose a child with anxiety as this is not always the case.
- Children will look to parents to model responses to stress and worry. Talking about your thought processes is hugely beneficial.

How to support your child's mental health and wellbeing



Kooth

Kooth is a free online service offering emotional and mental health support for children and young people

www.kooth.com

childline

ONLINE, ON THE PHONE, ANYTIME
childline.org.uk | 0800 1111

All roads lead to Prom...

Prom is not a right. It is earned.

- Attendance
- Punctuality
- Conduct (including social times)
- Effort

