

Options Booklet

Dream BIG // Work Hard // Be Kind



2025/2026

MESSAGE FROM THE PRINCIPAL

Year 9 students are reaching an important milestone in their education and their future pathways. For the first time there will be an opportunity to choose some of the subjects that they are intending to study in Key Stage 4. Please read this booklet carefully as it should be used as a 'Directory of Subjects' that are available. The Senior Leadership Team, Careers advice team, subject staff and your child's tutor will all be available to answer any questions and offer advice and I strongly urge you to engage with our colleagues to ensure the most informed choice.

The Key Stage 4 (KS4) offer has been designed to prepare students to make the successful transition into further education, employment or training. It is essential that, together, we ensure that the subjects chosen are appropriate for your child's ability or talent and that the outcome is of the highest quality. Guidance will be given to your child as to which subjects may suit them best.

Raising the aspirations of students is central to our ethos here at Hanham Woods Academy. For students who want to achieve the best possible set of qualifications and who may be considering University or other Higher Education Institutions in the future, the EBacc subjects should form part of students' options. EBacc subjects are the core subjects of Mathematics, English and Science (combined or triple), a language (French or Spanish at Hanham) and a Humanities subject (History or Geography). Students can then take two additional subjects of any choice. We advise students take the EBACC selection of subjects as many Higher Education Institutions will look at which GCSE subjects have been studied when making an offer. at the wide range of subjects on offer reflects our commitment to a curriculum of breadth and depth and nurtures learning and skills beyond the identified EBacc.

We want our students to achieve the best academic outcomes they can as this will enable them to have further choices when they reach the end of Year 11. By making thoughtful choices based on career aspirations, aptitude and subjects they enjoy they will be laying down strong foundations for the future.

Very best wishes for this exciting and important phase of your academic career.

Chris Ballard
Principal

MESSAGE FROM YOUR RAISING STANDARDS LEAD

Making your curriculum choices in Year 9 is a very important part of your life at the Academy. It is an opportunity for you to take control of your education and shape the direction of your future. The options you choose for your qualifications will affect how you spend your day-to-day life at the Academy for the next couple of years and they may also influence what course or job you decide to do after Year 11.

It is important to choose subjects and methods of study that interest and motivate you. Spend time thinking about what you enjoy doing, what keeps you interested in something and what makes you work hard.

Reflect upon the Options assemblies you have seen during tutor time over the course of Term 3 and the small group meetings with Miss Mujkic, consider the impact that the presentations had upon you. Remember that you are not alone in making these decisions; everyone in your Year Group is going through the same process. Your teachers, friends, parents, carers and family will be able to guide, advise and support you in this important decision-making process.

Good reasons for choosing a subject/course:

- You are good at the subject
- You think you will enjoy the course
- It fits your career ideas and plans
- It goes well with your other choices
- It helps to give you plenty of choice at Post -16
- You think you might want to continue studying it at Post 16
- Your research shows that it will interest you and motivate you to learn

Bad reasons for choosing a subject/course

- Your friends have chosen it
- You think it will be easy
- You think it's a good option for a boy or girl
- Someone else thinks it is a good idea
- You like the teacher you have now
- You did not have time to research your options properly

Once you have submitted your options choices, we will try to meet requests. However, please remember that there are limited numbers of places in some subject areas.

Best wishes for your future studies

Andrew Bringham
Associate Assistant Principal

Introduction and Contents

All students have to study GCSEs in English, Mathematics and Combined Science. In addition, all students will have Core PE (no GCSE), RE and Careers, Personal, Social and Health Education (CPSHE).

We want all Hanham students to achieve a good balance of academic and creative or vocational qualifications. We expect the vast majority of students to take the five key academic qualifications which are the foundation for further study and university (the EBacc subjects). The Government and 'Russell Group' universities are also encouraging students to follow this path. Triple Science is available to students who show an aptitude for Science. It is highly desirable if you wish to study a science qualification at degree level.

The 5 EBACC subjects

1	2	3	4	5
English	Maths	Science	History or Geography	French or Spanish

We therefore encourage most students to choose either History or Geography and either French or Spanish from the options below.

All students must take either History, Geography, French, Spanish, Triple Science or Computer Science as one of their options.

Subject	Qualification	Is it part of the EBacc?	Page
English	GCSE x2	Yes	5
Maths	GCSE	Yes	6
Combined and Triple Science	GCSE x2/x3	Yes	7
History	GCSE	Yes	8
Geography	GCSE	Yes	9
Religious Studies	GCSE	No	10
French	GCSE	Yes	11
Spanish	GCSE	Yes	12
Computer Science	GCSE	Yes	13
Physical Education	GCSE	No	14
BTEC Technical Sport	BTEC	No	15
Health and Social Care	BTEC Tech Award	No	16-17
Fine Art	GCSE	No	18
Photography	GCSE	No	19
Drama	GCSE	No	20
Music	GCSE	No	21
DT Product Design	GCSE	No	22
DT Textiles	GCSE	No	23
DT Hospitality and Catering	GCSE	No	24
Sociology	GCSE	No	25-26

GCSE English Language and English Literature



Introduction

“The limits of my language mean the limits of my world.” **Ludwig Wittgenstein**

“If you want your children to be intelligent, read them fairy tales. If you want them to be more intelligent, read them more fairy tales.” **Albert Einstein.**

How will I be assessed?

Component	Content	Assessment	% of grade
English Language Paper 1	<i>Explorations in Creative Reading and Writing.</i> <ul style="list-style-type: none"> Section A – Four reading/analysis tasks based on a fiction source Section B – Writing their own creative text based on a prompt or scenario. 	1hr 45min Exam	50%
English Language Paper 2	<i>Writer’s Viewpoints and Perspectives.</i> <ul style="list-style-type: none"> Section A – Four reading/analysis tasks based on two linked sources Section B – Writing to present a point of view 	1hr 45min Exam	50%
English Literature Paper 1	<i>Shakespeare and the 19th-Century Novel</i> <ul style="list-style-type: none"> Section A – Essay question on a Shakespeare play Section B – Essay question on a 19th Century novel 	1hr 45min Exam	40%
English Literature Paper 2	<i>Modern Texts and Poetry</i> <ul style="list-style-type: none"> Section A – Essay question on a modern text Section B – Comparative essay on two poems from the AQA Anthology Section C – Essay question comparing two unseen poems 	2hr 15min Exam	60%

What will I learn from these courses?

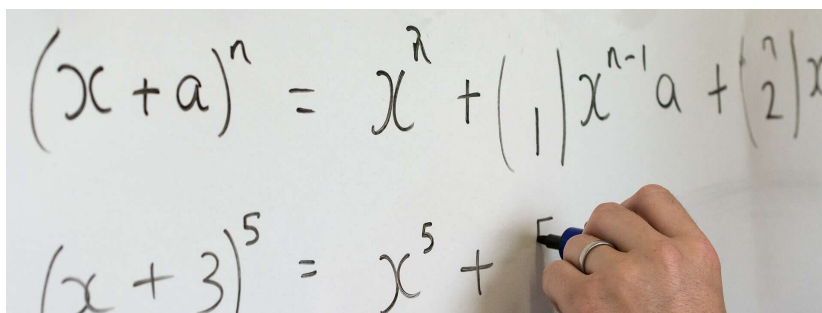
English Language and English Literature are core subjects and offer students the chance to learn and practise skills of communication, interpretation, analysis and creative writing.

What careers can this subject lead to?

Good English qualifications are useful for a wide range of college and employment careers, including the media and journalism, publishing, advertising and teaching.

For further details please contact **Mrs Morgan-Patel**

GCSE Mathematics



The image shows a whiteboard with two binomial expansion formulas written in black marker. The top formula is $(x+a)^n = x^n + \binom{n}{1}x^{n-1}a + \binom{n}{2}x^{n-2}a^2 + \dots$. The bottom formula is $(x+3)^5 = x^5 + \dots$, with a hand holding a blue marker writing the coefficient 5 in the next term.

Maths at Hanham Woods Academy

At Hanham Woods Academy, the Maths department are striving for **every** student to pass their GCSE and with the highest grade possible.

Mathematics is hugely important in society and with a firm grasp and understanding of the subject, many doors are open to you.

The subject equips students with the ability to reason logically, analyse and to solve problems. These skills are all essential within the workplace and in society. Mathematics is an international language and one that is fundamental to understand the world in which we live.

How will I be assessed?

Component	Content	Assessment	% of grade
Paper 1 Non-calculator	Number, Geometry and measures, Algebra, Statistics, Probability, Ratio, Proportion and rates of change	1hr 30min Exam	33.3%
Paper 2 Calculator	Number, Geometry and measures, Algebra, Statistics, Probability, Ratio, Proportion and rates of change	1hr 30min Exam	33.3%
Paper 3 Calculator	Number, Geometry and measures, Algebra, Statistics, Probability, Ratio, Proportion and rates of change	1hr 30min Exam	33.3%

Equipment required

A scientific calculator (Casio FX-83 GT Plus) and mathematical equipment: a protractor and a compass.

What will I learn from this course?

In this course you will learn how to apply multiple areas of mathematics to real life problems in unusual contexts. You will learn the problem-solving skills needed to find solutions when working in a wide range of jobs.

What careers can this subject lead to?

Mathematics students are often widely acknowledged for analytical, statistical and problem-solving skills. A strong Mathematics GCSE will be highly regarded by employers. In addition, having a good GCSE grade opens many doors for future opportunities, regardless of whether students wish to take mathematics further.

For further details please see **Mrs Williams**

GCSE Combined and Triple Science



Introduction

“Nothing in life is to be feared, it is only to be understood” **Marie Curie**

“I have not failed, I’ve just found 10,000 ways that won’t work” **Thomas Edison**

“If I have seen further than others, it is by standing upon the shoulders of giants” **Sir Isaac Newton**

How will I be assessed?

Component	Content for Combined <u>and</u> Triple Sciences	Combined Science		Triple Science	
		Assessment	% of grade	Assessment	% of grade
Biology 1 (B1)	Cells and control, genetics, Natural Selection and genetic modification & health, disease and the development of medicines	1hr 10 min exam	16.7%	1hr 45 min exam	50% of Biology GCSE
Biology 2 (B2)	Plant structures and their functions, animal coordination, control and homeostasis, exchange and transport in animals & ecosystems and material cycles	1hr 10 min exam	16.7%	1hr 45 min exam	50% of Biology GCSE
Chemistry 1 (C1)	States of matter and mixtures, chemical changes & extracting metals and equilibria	1hr 10 min exam	16.7%	1hr 45 min exam	50% of Chemistry GCSE
Chemistry 2 (C2)	Groups in the periodic table, rates of reaction and energy changes, fuels and earth science	1hr 10 min exam	16.7%	1hr 45 min exam	50% of Chemistry GCSE
Physics 1 (P1)	Motion and forces, conservation of energy, waves, light and the electromagnetic spectrum & radioactivity	1hr 10 min exam	16.7%	1hr 45 min exam	50% of Physics GCSE
Physics 2 (P2)	Energy, forces and their effects, electricity and circuits, magnetism and the motor effect, electromagnetic induction, particle model, & forces and matter	1hr 10 min exam	16.7%	1hr 45 min exam	50% of Physics GCSE

Assessment overview

Students who choose the Triple Science option, need to be consistently achieving ‘on track’ or ‘deepening’ in Year 9 and achieve over 60% in the entry assessment (the maximum size of the class is 34 and the students with the highest percentage scores will be entered into this option). All other students study Combined Science. All papers have a mixture of different question styles, including multiple-choice questions, short-answer questions, calculations and extended open-response questions. All students also have to complete 12 required practicals that are then assessed within the written examination papers. No coursework or controlled assessments.

What will I learn from these courses?

GCSE study in the sciences provides the foundation for understanding the material world. Scientific understanding is changing our lives and is vital to the world’s future prosperity. All students will learn essential aspects of the knowledge, methods, processes and uses of science.

What careers can this subject lead to?

Many technical careers including medical, dental, teaching, engineering, agricultural, veterinary medicine etc. All employers find Sciences attractive due to the numeracy and technical skills associated with these diverse qualifications.

For further details please contact **Mrs Thomas**

GCSE History

Examination Board: Edexcel



Introduction

“Historians are regarded as having had an education that trains their minds to assemble, organise and present facts and opinions and this is a useful quality in many walks of life and careers. History is an excellent preparation for very many other jobs.” *Which Magazine Consumer Guides*

How will I be assessed?

Component	Content	Assessment	% of grade
Paper 1	<ul style="list-style-type: none"> • Crime and punishment in Britain c.1000 to the present • Whitechapel c.1870-c.1900: crime, policing and the inner city (including Jack the Ripper) 	1hr 20 min Exam	30%
Paper 2	<ul style="list-style-type: none"> • Superpower relations and the Cold War 1941-1991 • Early Elizabethan England 1558-1588 	1hr 50 min Exam	40%
Paper 3	<ul style="list-style-type: none"> • The USA 1954-1975: conflict at home and abroad (including the US Civil Rights movement and the Vietnam War) 	1hr 25min Exam	30%

Skills/equipment required

A good level of literacy is required for this course. You will also need to be confident in revising and recalling factual knowledge, although the course is concerned with historical thinking rather than just the recall of facts.

What will I learn from this course?

History is just as important for the skills it teaches you as for the knowledge you gain. By studying History you learn to argue a case, both orally and on paper; you learn to draw conclusions from evidence and to consider why it is reliable or not and you learn to put yourself in the position of other people and look at things from their points of view. These skills are highly valued by both universities and employers.

What careers can this subject lead to?

Students with good History qualifications often go on to careers in Journalism, the Law and Politics, Accounting, Business and Management, Education and many others.

For further details please see **Ms Dora**

GCSE Geography



Introduction

Geography inspires students to become global citizens by exploring their own place in the world, their values and responsibilities to other people, to the environment and to the sustainability of the planet. The course will give you the chance to get to grips with some of the big questions which affect our world and understand the social, economic and physical forces and processes which shape and change our world.

How will I be assessed?

Component	Content	Assessment	% of grade
Paper 1 Physical Environment	<p>Section A – The Challenge of Natural Hazards - Natural Hazards, Tectonic Hazards, Weather Hazards, Climate Change</p> <p>Section B – The Living World - Ecosystems, Tropical Rainforests, Hot Deserts</p> <p>Section C – Physical Landscapes in the UK - UK Physical Landscapes, Coastal Landscapes, River Landscapes</p>	1hr 30min Exam	35%
Paper 2 Human Environment	<p>Section A – Urban Issues and Challenges - Urbanisation, Mega Cities, Lagos, Nigeria and Bristol</p> <p>Section B - The Changing Economic World - Development, Nigeria – In depth study, UK's Economy</p> <p>Section C -The Challenge of Resource Management - Global distribution of resources, UK – Food, water and energy, Global water supply</p>	1hr 30min Exam	35%
Paper 3 People and the Environment	<p>Section A – Issue Evaluation - Pre-release material released 12 weeks before the exam covering one of the topics studied. Analyse and interpret in class and then questions on the related issue</p> <p>Section B – Fieldwork - General fieldwork techniques and your geographical enquiry</p>	1hr 15min Exam	30%

Skills/equipment required

A good level of literacy, mathematics and geographical application is required along with the ability to study independently.

What will I learn from this course?

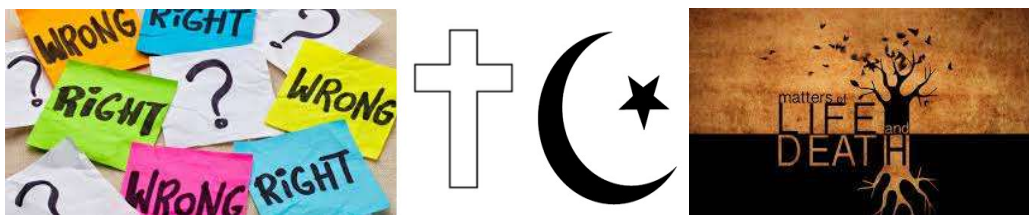
It is very practical with opportunities to learn new skills such as modern computer-based mapping (called GIS), map skills, interpreting photographs, fieldwork skills, presenting, role play and debating techniques. You will improve your literacy through your report writing and written work and make practical use of your numeracy skills when you interpret data and construct graphs. Fieldwork is an important part of Geography. You will have the brilliant opportunity to experience some of the ideas you have learnt about in class, see things differently and of course, have fun!

What careers can this subject lead to?

Students with good Geography qualifications often go on to careers in Planning, Surveying, Environmental Consulting, Education and many others.

For further details please see **Mrs Fisher**

GCSE Religious Studies



Introduction

Religious Studies is the study of ethical issues and religious and humanist perspectives on these. Students study a broad range of issues that affect life in the 21st century, such as, LGBTQI+ rights, abortion rights, the role of family and the role of humanity amidst the climate crisis. Students will have the opportunity to study religious views on these big issues, consider how religion has impacted, and continues to impact our governing laws, as well as considering their own views on such difficult issues.

How will I be assessed?

Component	Content	Assessment	% of grade
Paper 1	The beliefs, teachings and practices of Christianity	1 hour exam	25%
Paper 2	The beliefs, teachings and practices of Islam	1 hour exam	25%
Paper 3	Religion, philosophy and ethics in the modern world from a Christian perspective, including four themes: Issues of relationships Issues of life and death Issues of good and evil Issues of human rights	2 hour exam	50%

Skills/equipment required

You will need a good grasp of English language and literacy, as well as tolerance of different points of view. The course is concerned with ethical and philosophical thinking rather than just the recollection of facts.

What will I learn from this course?

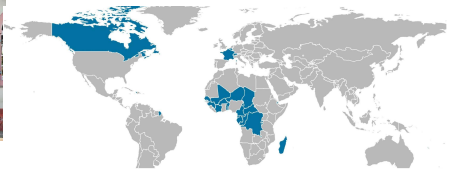
Students will have studied some of these topics during Year 9 giving them a good foundation for a good GCSE grade. Not only does this course develop students' understanding of different cultures locally, nationally and in the wider world, but it also contributes to their spiritual and moral development, their health and well-being and helps them to develop their own values, opinions and attitudes, which will contribute to social and community cohesion. It helps students learn to argue a case, both orally and on paper and draw conclusions from evidence and people's beliefs. These skills are highly valued by both universities and employers.

What careers can this subject lead to?

This qualification is valued by many further education courses and career paths, such as, medicine, law, the police, armed forces, counselling, social work, youth work, teaching, journalism, Human Resources, administration, working in another country or in any career that requires an understanding of a variety of people and how their beliefs may affect their lives.

For further details please see **Miss Liebert**

GCSE French



Where is French spoken in the world? (Countries with French as their official language)

Introduction:

“Those who know nothing of foreign languages know nothing of their own.” *Johann Wolfgang von Goethe*. “For English speakers, French is the easiest language to learn. In fact, for several centuries French was the official language of the English court. The list of English words with French roots is basically infinite.” *The Business Insider*

How will I be assessed?

Component	Content	Assessment	% of grade
Paper 1 Listening	Students listen to a selection of extracts and complete exercises such as gap filling, answering questions, ticking boxes, true or false, dictation of short, spoken extracts. Questions in English only.	35 min (F) 45 min (H)	25%
Paper 2 Speaking	Speaking using clear and comprehensible language to undertake a Role-play. Carry out a Reading aloud task. Talk about visual stimuli (photo or similar).	7-9 min (F) 10- 12 min (H) 15 min prep time	25%
Paper 3 Reading	Understanding and responding to written texts which focus predominantly on the vocabulary and grammar at each tier. Inferring plausible meanings of single words when they are embedded in written sentences. Translating from the target language into English.	45 min (F) 1hour (H)	25%
Paper 4 Writing	Writing text in the language in a lexically and grammatically accurate way in response to simple and familiar stimuli. Translating from English into the target language.	1h10 min (F) 1h15 (H)	25%

Skills/equipment required

The course is designed to use the vocabulary learnt in Key Stage 3 (KS3) and use it to express and share more challenging and interesting ideas and opinions. If you wish to study a language not previously studied in KS3 please speak to the subject leader.

What will I learn from this course?

You will learn to express and understand opinions about current affairs and topics that are important to young people. You will also learn to manipulate the French language in order to have natural conversations and communicate with French speaking people.

What careers can this subject lead to?

Students with good qualifications in Languages often go on to careers in Journalism, Education, Tourism, Engineering, Medicine and many others.

For further details please see **Mr Bringhurst**

GCSE Spanish

HABLA
ESPAÑOL?



Where is Spanish spoken in the world? (Countries with Spanish as their official language)

Introduction:

“One language sets you in a corridor for life. Two languages open every door along the way.” *Frank Smith*

“For many, learning Spanish is rapidly becoming a business necessity. Spanish is becoming more and more important with regards to business” *Studyspanish.com*

How will I be assessed?

Component	Content	Assessment	% of grade
Paper 1 Listening	Students listen to a selection of extracts and complete exercises such as gap filling, answering questions, ticking boxes, true or false, dictation of short, spoken extracts. Questions in English only.	35 min (F) 45 min (H)	25%
Paper 2 Speaking	Speaking using clear and comprehensible language to undertake a Role-play. Carry out a Reading aloud task. Talk about visual stimuli (photo or similar).	7-9 min (F) 10- 12 min (H) 15 min prep time	25%
Paper 3 Reading	Understanding and responding to written texts which focus predominantly on the vocabulary and grammar at each tier. Inferring plausible meanings of single words when they are embedded in written sentences. Translating from the target language into English.	45 min (F) 1hour (H)	25%
Paper 4 Writing	Writing text in the language in a lexically and grammatically accurate way in response to simple and familiar stimuli. Translating from English into the target language.	1h10 min (F) 1h15 (H)	25%

Skills/equipment required

The course is designed to use the vocabulary learnt in KS3 and use it to express and share more challenging and interesting ideas and opinions. If you wish to study a language not previously studied in KS3 please speak to the subject leader.

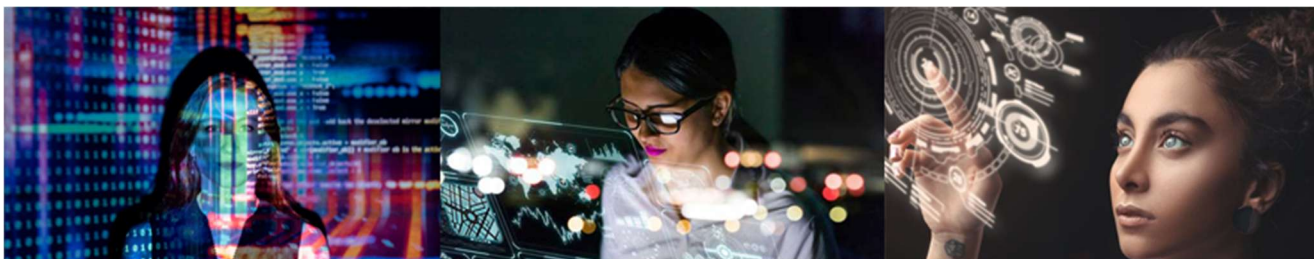
What will I learn from this course?

You will learn to express and understand opinions about current affairs and topics that are important to young people. You will also learn to manipulate the Spanish language in order to have natural conversations and communicate with Spanish speaking people.

What careers can this subject lead to?

Students with good qualifications in Languages often go on to careers in Journalism, Education, Tourism, Engineering, Medicine and many others.

For further details please see **Mr Bringhurst**



Introduction

“Crossword puzzles are designed to be solved, while codes and ciphers are designed to prevent solution. With codes, you have to be prepared to work and fail.”

— Liza Mundy (Women Code Breakers of World War II)

How will I be assessed?

Component	Content	Assessment	% of grade
Paper 1 Computer Systems	This unit will teach you the theory about a wide range of issues such as hardware and software, the representation of data in computer systems. A mix of short and longer answer and extended response questions assessing a student’s theoretical knowledge.	1hr 30min Exam	50%
Paper 2 Computational Thinking, Algorithms and programming	This unit covers the theory of algorithms, programming techniques, computational logic and data representation. A mix of short and longer answer questions assessing a student’s practical problem solving and computational thinking skills.	1hr 30min Exam	50%

Skills/equipment required

Students who choose the Computer Science option, need to be consistently achieving ‘on track’ or ‘deepening’ in Year 9. This course requires an interest in computers and programming outside of the classroom (3x15 mins minimum per week) as well as an ability to solve problems. Having access to a PC or laptop at home is not necessary.

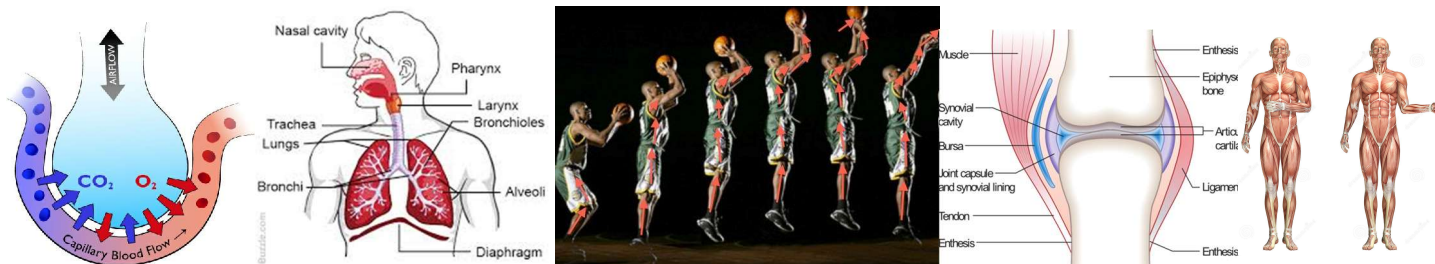
What will I learn from this course?

The course covers the following topics: the theory of algorithms, programming fundamentals, producing robust programs, Boolean logic, programming languages and Integrated Development Environments; the theory of systems architecture, memory and storage, computer networks, connections and protocols, network security, systems software, ethical, legal, cultural and environmental impacts of digital technology.

What careers can this subject lead to?

Computer Science is an exciting subject and can provide you with huge opportunities across many industries, for example: Computer Programmer, Machine Learning Engineer, CAD Designer, Games Developer, Clothes Designer, Software Developer, Software Architect, Technical Author, Music Data Analyst, MI5, MI6 and GCHQ.

GCSE Physical Education



Introduction

“Studying GCSE PE enabled me to combine my love of the practical and theoretical elements of Physical Education which underpin sport. It has aided my development in a range of skills such as communication, organisation, analysis and evaluation which I feel now contributes to my journey and aspiration of becoming a PE teacher.” *Katie Iles, HWA 6th Form student and British gymnast.*

How will I be assessed?

Component	Content	Assessment	% of grade
Paper 1: The human body & movement	<ul style="list-style-type: none"> Applied anatomy & physiology Movement analysis Physical training Use of data 	1hr 15min Exam	30%
Paper 2: Socio-cultural influences & well-being	<ul style="list-style-type: none"> Sports psychology Socio-cultural influences Health, fitness & well-being Use of data 	1hr 15min Exam	30%
Practical performance	<ul style="list-style-type: none"> Students are assessed as a player/performer in three different activities (one in a team activity, one in an individual activity and a third from either team or individual). Written analysis & evaluation of performance (coursework) 	Internal assessment, external moderation	40%

Skills/equipment required

A good level of literacy is required for this course. This is a challenging course, with a heavy focus on theoretical elements of Physical Education. Students who have a strong interest in Physical Education and are committed to developing their levels of knowledge and understanding beyond ‘playing the game’ will benefit from this course. Students should be good at Physical Education and be of a club standard in several activities. Students need their normal PE kit for some lessons, but will have the opportunity to purchase a GCSE PE polo shirt. A textbook will be provided.

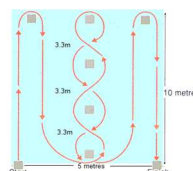
What will I learn from this course?

Completing this course will help students to develop their understanding of theoretical Physical Education, looking at factors that underpin performance and involvement in physical activity and sport. Students must be willing to attend after-Academy clubs to develop their skills further.

What careers can this subject lead to?

Students with good Physical Education qualifications often go on to careers in Sports Coaching, Physiotherapy, Sports Journalism, Management, Education and many others.

For further details please see **Mr Swanton**



Introduction

The BTEC Tech award in Sport is an enjoyable and rewarding course but at the same time it is hard work and challenging. It is vital that you have a clear understanding of the important concepts and theories that underpin sport. There are practical and theory lessons. All the practical lessons will be linked to the theory lessons and coursework being completed at the time.

How will I be assessed?

You will be assessed in 3 units across year 10 and 11. There is an exam at the end of Year 11. All coursework will be graded given a score out of 60 marks. Students can be awarded a level 1 or 2 at a pass/merit/distinction.

Component	Content	Assessment	% of grade
Component 1: Preparing Participants to Take Part in Sport and Physical Activity	<p>Learning outcome A: Explore types and provision of sport and physical activity for different types of participant</p> <p>Learning outcome B: Examine equipment and technology required for participants to use when taking part in sport and physical activity</p> <p>Learning outcome C: Be able to prepare participants to take part in sport and physical activity.</p>	Coursework based: Internal assessment external moderation	1 of 3 units 30%
Component 2: Taking Part and Improving Other Participants Sporting Performance	<p>Learning outcome A: Understand how different components of fitness are used in different physical activities.</p> <p>Learning outcome B: Be able to participate in sport and understand the roles and responsibilities of officials.</p> <p>Learning outcome C: Demonstrate ways to improve participants sporting techniques.</p>		1 of 3 units 30%
Component 3: Developing Fitness to Improve Other Participants Performance in Sport and Physical Activity	<p>Assessment objective A: Explore the importance of fitness for sports performance.</p> <p>Assessment objective B: Investigate fitness testing to determine fitness levels.</p> <p>Assessment objective C: Investigate different fitness training methods.</p> <p>Assessment objective D: Investigate fitness programming to improve fitness and sports performance.</p>	1hr 30min exam	1 of 3 units 40%

Skills/equipment required

A good level of literacy is required for this course. Students who have a strong interest in PE and are committed to developing their levels of knowledge and understanding beyond 'playing the game' will benefit from this course. This course is largely coursework based and all of this coursework is completed electronically, therefore students require strong ICT skills. Students need their normal PE kit on occasions. Students will have the opportunity to purchase a BTEC Sport polo shirt and a revision guide for the exam unit.

What will I learn from this course?

Completing this course will help students to develop their understanding of theoretical PE, understanding factors that underpin performance and involvement in physical activity and sport.

What careers can this subject lead to?

Students with good Physical Education qualifications often go on to careers in Sports Coaching, Physiotherapy, Sports Journalism, Management, Education and many others.

For further details please see **Mr Swanton**

BTEC Tech award Level 2 Health and Social Care

Introduction

About 3 million people work in health or social care and together these jobs account for nearly one in ten paid jobs



in the UK. Demand for both health and social care is likely to rise so they will continue to play a key role in UK society, and the demand for people to fill these vital jobs will increase.

How will I be assessed?

Component	Content	Assessment	% of grade
Component 1: Learning aim A: Learning aim B:	Human Lifespan and Development: - Growth and development across the life stages - How individuals deal with life events	Assignment worth 60 marks. Completed in exam conditions on an assessment day	30%
Component 2: Learning aim A: Learning aim B:	Health and Social Care Services and Values - Services and the barriers to accessing them - Demonstrating the care values	Assignment worth 60 marks. Completed in exam conditions on an assessment day	30%
Component 3: Learning aim A: Learning aim B: Learning aim C:	Health and Wellbeing: - Factors that affect health and wellbeing - Interpreting health indicators - Person centred health and wellbeing improvement plans	Exam - 2hr Compulsory minimum pass requirement	40%

*note that you are required to complete and pass both assignments and the exam to complete and pass the qualification

Skills/equipment required

Students will need to have good English skills due to the written demands of the course. The focus of this course is working with people in the two sectors (Health and Social Care), so good communication skills and confidence is essential. This course will prepare students for both working life and/or further academic success. It is a balance of work-based skills and crucial learning and study skills, as the learning comprises of a number of different activities.

What will I learn from this course?

The course will provide a good foundation for anyone wanting to study Health and Social Care at Level 3 and complements other GCSE and A Level subjects including: Psychology, Sociology, Biology, Geography, History, Business Studies, Sociology, English (Literature and Language), Media Studies, Religious Studies/Theology, Art/Photography, Modern Foreign Languages, PE/Sports Coaching and Law.

What is it important for me to know about this course?

Possibly the most important aspect to be aware of is that the formal assessment begins in Year 10. In terms one and two of year 10 you will prepare for your assessment. This will be in class and in home learning. The result will be a workbook for you to take into your assessment day with you. The first formal assessment will be in Year 10 in Term 3. This is a full day assessment, is compulsory and will be worth 30% of your grade. Your second internal assessment will be in Year 11 in term 1 and 2, this means that by December 2025 you will have completed 60% of your course. January to May of Year 11 is then focused on the exam, revision and preparation.

What is the timeline of the course?

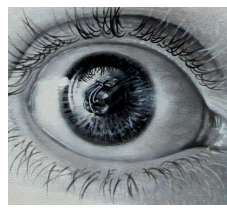
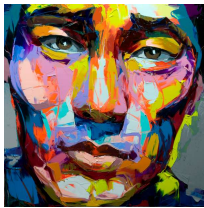
Year	Term 1	Term 2	Term 3	Term 4	Term 5	Term 6
10	Component one study and workbook creation		Component one assessment	Component one feedback and re-draft	Component two study and workbook creation	
11	Component two assessment	Component two feedback and re-draft	Component three – exam. Revision, preparation and exam skills			

What careers can this subject lead to?

Health and Social Care is a recognised as a desirable subject for anyone wishing to enter into careers such as: Childcare, Teacher (all subjects), Carer, Special Education support, Nurse/Doctor/Midwife/Health professional, Social Worker, Counsellor, Lawyer, Criminologist, Psychologist, Public Relations, Human Resources and University researcher/lecturer. The two core sectors themselves (Health and Social Care) have a broad and wide-ranging career pool available which are studied as part of components 2 and 3.

For further details please see **Mr Tucker**

GCSE Fine Art



Introduction

"If I could say it in words there would be no reason to paint" Edward Hopper, American Painter.

The GCSE Fine Art Option is a fantastic way to access all the different specialisms within Art & Design. In this course you will experience a variety of techniques and processes such as Photography, 3D Art, Painting, Printing and Drawing. If you are enthusiastic about Art, choose GCSE Fine Art.

How will I be assessed?

You will be required to submit a portfolio of work in response to two to three projects whilst exploring a variety of artistic skills and processes. The course is made up of two components: coursework worth 60% and an externally set assignment worth 40%. You will be assessed for each component using the criteria below.

Component	Content	% of grade
Assessment Objective 1	AO1: Develop ideas through investigations, demonstrating critical understanding of sources.	25%
Assessment Objective 2	AO2: Refine work by exploring ideas, selecting and experimenting with appropriate media, materials, techniques and processes.	25%
Assessment Objective 3	AO3: Record ideas, observations and insights relevant to intentions as work progresses.	25%
Assessment Objective 4	AO4: Present a personal and meaningful response that realises intentions and demonstrates understanding of visual language.	25%

Skills/equipment required

You will be required to buy a A2 portfolio which is available from the Art Department. It is also a good idea to have your own materials such as drawing pencils, paintbrushes and paints as these will be essential to being 'Ready to Learn'. You will be expected to spend at least 1 hour on Home Learning per week. Students aiming for grade 6 upwards will need to commit to Art booster sessions after teaching time.

What will I learn from this course?

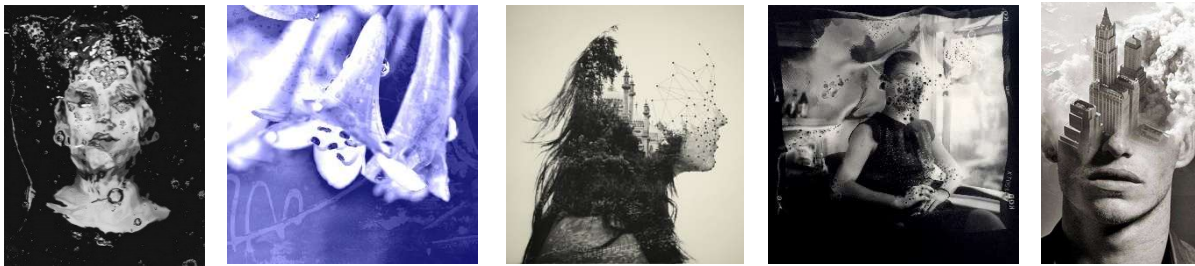
In Year 10 the course will focus on skills and sketchbook building, this will lay a strong foundation for Year 11 whereby students will be expected to work more independently. The GCSE Fine Art Option is a fantastic way to experience all the different specialisms within Art & Design. This course is an excellent step towards higher education such as BTEC Level 3 & A-Level courses or art related apprenticeships.

What careers can this subject lead to?

Choosing GCSE Fine Art as an option could lead to careers such as Computer Animation, Photography, Fashion Design, Game Art & Design, Media Arts & Animation, Visual Effects & Motion Graphics, Art & Design Teacher, Gallery Curator, Special Effects Make Up Designer, Theatrical Set Designer for Film, Television or Theatre, or even as an independent professional Artist or Designer. The skills learnt in Art and Design are widely transferrable to a variety of exciting careers. The creative industries are responsible for nearly six percent of the UK GDP – this represents a genuine and credible career pathway.

For further details please see **Mr Clarke**

GCSE Photography



Introduction

GCSE Photography is a fantastic option for those students whose creativity take a more digital route. The Photography course is very well resourced, boasting 18 digital SLR cameras and lighting equipment. GCSE Photography is 2-year course which allows students to develop, expand and refine their knowledge and skills as well as prepare them for Art, Craft & Design courses at A-Level, college or apprenticeships.

How will I be assessed?

Component 1: Portfolio. This must include one independent extended project. A portfolio of work will be marked out of 4 assessment objectives – 96 marks.

Component 2: Externally Set Assignment. Students respond to a chosen starting point from an externally set assignment paper and create a body of work relevant to their subject title, evidencing coverage of all four assessment objectives. There will be a Preparatory period of approximately 4 months followed by 10 hours of supervised time.

Component	Content	% of grade
Assessment Objective 1	AO1: Develop ideas through investigations, demonstrating critical understanding of sources.	25%
Assessment Objective 2	AO2: Refine work by exploring ideas, selecting and experimenting with appropriate media, materials, techniques and processes.	25%
Assessment Objective 3	AO3: Record ideas, observations and insights relevant to intentions as work progresses.	25%
Assessment Objective 4	AO4: Present a personal and meaningful response that realises intentions and demonstrates understanding of visual language.	25%

Skills/equipment required

As part of the course you will be investigating other artists and photographers so you will be expected to spend at least 1 hour on Home Learning per week.

What will I learn from this course?

- Different styles of photography (portrait, still life, surrealism, landscape).
- Learn how to use the manual settings (shutter speed, aperture, etc).
- Learn how to use Photoshop.
- Learn how to use studio equipment/lighting.

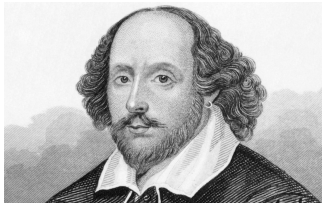
What careers can this subject lead to?

Choosing GCSE Fine Art as an option could lead to careers such as Computer Animation, Photography, Graphic Design & Illustration, Fashion Photography and Photo Journalism.

The creative industries are responsible for nearly six percent of the UK GDP – this represents a genuine and credible career pathway.

For further details please see **Mr Clarke**

GCSE Drama



Introduction

“Drama aids students in skills needed in the workplace: flexibility, the ability to solve problems and communicate, the ability to learn new skills, to be creative and innovative, and to strive for excellence.”
Joseph M. Calahan, Director of Corporate Communications, Xerox Corporation

How will I be assessed?

Component	Content	Assessment	% of grade
Component 1	Understanding Drama. Students will have to: <ul style="list-style-type: none">• Demonstrate their knowledge and understanding of drama and theatre.• Study one set play.• Provide an analysis and evaluation of the work of live theatre makers.	1hr 45min exam	40%
Component 2	Devising Drama. Students will have to: <ul style="list-style-type: none">• Create a piece of devised theatre.• Perform a piece of devised drama (students may contribute as performer or designer).• Provide an analysis and evaluation of their work.	Practical	40%
Component 3	Texts in Practice. Students will have to: <ul style="list-style-type: none">• Perform two extracts from one play (students may contribute as performer or designer).	Practical	20%

Skills/equipment required

A good level of literacy and a passion for performing is required for this course. The course is concerned with understanding, creating and applying performance knowledge and skills to both practical work and theoretical work.

What will I learn from this course?

Drama is just as important for the skills it teaches you and the knowledge you gain. Drama engages and encourages you to become confident performers and designers with the skills you need for a bright and successful future. By studying Drama, you learn to work as a team, communicate with others effectively; both orally and on paper, problem solve and be creative. These skills are highly valued by universities and employers.

What careers can this subject lead to?

Students with a good Drama qualification often go on to careers in Acting, Directing, Stage Management, Lighting Designer/Technician, Sound Technician, Costume Designer and many more. Students who study Drama often use their skills in careers such as Teaching, Law, Medicine, Journalism, Social Work, Management and many more.

For further details please see **Mrs Hurrell**

GCSE Music



Introduction

GCSE Music is a very unique subject as it allows you to study something that you can already do as a hobby and for enjoyment in your spare time. The course encourages you to explore many different types of music and it also allows you to focus on the types of music that you love and are most passionate about. Taking GCSE Music will allow you to learn new skills, develop your confidence and creativity and become much more disciplined at practising and rehearsing which will help all of your other subjects as well.

How will I be assessed?

Component	Content	Assessment	% of grade
Unit 1	<ul style="list-style-type: none">Listening to unfamiliar musicListening to study pieces taught in class set by the exam board	1hr 30min written exam of listening exercises and written questions using excerpts of music	40%
Unit 2	<ul style="list-style-type: none">Two separate musical performances of 4 minutes in total (the ensemble must be at least 1 minute)	Solo performance (50%) Ensemble performance (50%)	30%
Unit 3	<ul style="list-style-type: none">Two compositions that must last at least 3 minutes in total	1 – Composing to a brief 2 – Free composition	30%

Skills/equipment required

It is preferred that students taking this course have been regularly playing an instrument for at least a year before starting. This can include music technology through the skill of sequencing. If you are not currently having instrumental tuition but are willing to start having lessons on an instrument this will benefit you significantly. It is not imperative that you can read music but it is helpful, as are basic keyboard skills and music theory knowledge. A good level of musical literacy (key words) is also very useful.

What will I learn from this course?

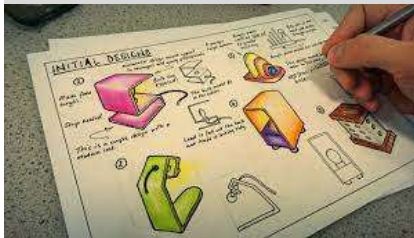
You will learn to become an exciting and professional performer on your chosen instrument(s) and be given many opportunities to play to audiences. You will be taught how to create your own music and be given the freedom to explore your own ideas through your own music. You will be taught a musical language that will allow you to analyse and appreciate music from all over the world and be given a keen insight into music that you have not yet discovered.

What careers can this subject lead to?

Students with good music qualifications can go on to become performers, composers, songwriters, producers, sound engineers and undertake any job in the creative and entertainment industries. Musicians can also become teachers, journalists, therapists and academics.

For further details please see **Mrs Linnegar**

GCSE Design and Technology: Product Design



Introduction

Design and Technology GCSE allows learners to identify and solve real problems through the design process and into production. Learners are encouraged to work creatively and through the course will develop a number of core skills, including practical skills, planning and decision making.

Assessment:

Component	Content Exam Board: EDUQAS	Assessment	% of grade
Unit 1 Exam	<ul style="list-style-type: none"> Section A – Core knowledge and understanding is presented in five clear and distinct topic areas: design and technology and our world, smart materials, electronic systems and programmable components, mechanical components and materials. Students are required to have broad knowledge of these topics Section B – In- depth knowledge and understanding of specialist technical principles. Students are required to study one of these areas: <ul style="list-style-type: none"> Natural and manufacture timber Thermoforming and thermosetting polymers 	2hr exam	50%
Unit 2 Non-Exam Assessment	Practical application of: <ul style="list-style-type: none"> Core technical principles Specialist technical principles Designing and making principles 	30-35hrs practical	50%

Skills/equipment required

Students suitable for this should be achieve at least On Track and Maths and Science.

What will I learn from this course?

Design and Technology prepares students to participate confidently and successfully in an increasingly technological world. Students will gain awareness and learn from wider influences on Design and Technology including historical, social, cultural, environmental and economic factors.

What careers can this subject lead to?

Product Designer, Engineering, Architecture, Software Engineer, Information Technology, Interior Design and Education.

For further details please see **Miss Sanderson**

GCSE DT: Textiles Design



Introduction

Textile design focusses on the creation of designs and products for woven, knitted, stitched, printed or decorative textiles that might have a functional or non-functional purpose.

How will I be assessed?

You will be required to submit a portfolio of work in response to two to three projects whilst exploring a variety of textiles skills and processes. The course is made up of two components: coursework worth 60% and an externally set assignment worth 40%. You will be assessed for each component using the criteria below.

Component	Content Exam board: AQA	% of grade
Assessment Objective 1	AO1: Develop ideas through investigations, demonstrating critical understanding of sources.	25%
Assessment Objective 2	AO2: Refine work by exploring ideas, selecting and experimenting with appropriate media, materials, techniques and processes.	25%
Assessment Objective 3	AO3: Record ideas, observations and insights relevant to intentions as work progresses.	25%
Assessment Objective 4	AO4: Present a personal and meaningful response that realises intentions and demonstrates understanding of visual language.	25%

Skills/equipment required

You will be required to buy a sketchbook available from Textiles. It is also a good idea to have your own sewing kit that includes embroidery needles, pins and unpicker. You need to have an enthusiasm for Textiles and willing to be creative.

What will I learn from this course?

Within the context of Textile Design, students will learn and then demonstrate the ability to:

- use textile design techniques and processes, appropriate to students' personal intentions, for example: weaving, felting, stitching, appliqué, construction methods and printing.
- use media and materials, as appropriate to students' personal intentions, for example: inks, yarns, threads, fibres, fabrics, textile materials, digital imagery.

What careers can this subject lead to?

Interior Designer, Fashion Designer, Garment Technologist, Visual Merchandiser, Fashion Marketing, Fashion Stylist, Pattern Designer, Teacher, Fashion Journalist, Textiles Colourist, Costume Designer, Textiles Designer, Creative Director and Textiles/Fashion Buyer.

For further details please see **Miss Sanderson**

GCSE Hospitality and Catering



Assessment

Component	Content Exam board EDUQAS	Assessment	% of grade
Unit 1 Exam	Hospitality and catering provision How hospitality and catering providers operate Health and safety in hospitality and catering Food safety in hospitality and catering	1hr 20mins exam 80 marks	40%
Unit 2 Non-Exam Assessment	Food Preparation and Nutrition in Action Understanding the importance of nutrition How cooking methods can impact on nutritional value Factors affecting menu planning How to plan production How to prepare and make dishes Presentation techniques Food safety practices Reviewing of dishes Reviewing own performance	12 hours 120 marks	60%

Skills/equipment required

Students suitable for this should be achieving at least 'On Track' for Maths and Science. Students must be prepared to bring in ingredients every week.

What will I learn from this course?

Hospitality and Catering equips learners with the knowledge, understanding and skills required to cook and apply the principles of working in a kitchen, nutrition and healthy eating. It encourages learners to cook, enables them to make informed decisions about food and nutrition and allows them to acquire knowledge in order to be able to feed themselves and others affordably and nutritiously, now and later in life.

What careers can this subject lead to?

NHS Dietician, Sports Nutritionist, Food Scientist, NPD Technologist, Chef, Catering, Food Technologist, Nutritional Therapist, Food Inspector, Food Engineer.

For further details please see **Miss Sanderson**

GCSE Sociology

Introduction

What is Sociology?

“Sociology is the study of human social life, groups and societies. It is a dazzling and compelling enterprise, having as its subject matter our own behaviour as



social beings. The scope of sociology is extremely wide, ranging from the analysis of passing encounters between individuals in the street up to the investigation of world-wide social processes”. Anthony Giddens

In studying Sociology at Hanham you will be challenged to consider ordinary life from new perspectives, you will develop critical thinking skills that you can apply to lifelong learning and you will develop a deeper understanding of society, institutions and individuals.

How will I be assessed?

Unit	Content	Assessment	% of grade
Unit 1:	Families and Households Education	1hr 45min Exam	50%
Unit 2:	Crime and Deviance Social Stratification. The sociological approach – research methods Sociological theories	1hr 45min Exam	50%
Synoptic content	The sociological approach – research methods Sociological theories	Assessed across the 2 units	

Skills/equipment required

A good standard of English is required for this course. The course is concerned with Sociological thinking, analysis and evaluation rather than just the recall of facts. There is also a wide ranging vocabulary associated with the study of sociology that you will need to understand and utilise effectively in your written work.

What will I learn from this course?

The course will provide a good foundation for anyone wanting to study Sociology at A Level and compliments other GCSE and A Level subjects including: Psychology, Biology, Geography, History, Business Studies, Health and Social Care, English (Literature and Language), Media Studies Religious Studies/Theology, Art/Photography, Modern Foreign Languages, PE/Sports Coaching, Law, Economics and Philosophy. It is particularly supportive of subjects such as History due to the analytical nature of the subject and supports English Language and Literature due to the skills and content covered.

What is it important to know about this course?

Sociology is a subject that you have never studied before, so everything will feel very new. The learning you complete in PSHE will be similar to an extent because we will consider real world experiences however the way we study in Sociology is very different. In order to support you on this new learning journey we begin Year 10 with an introduction to sociology unit. This outlines the basics of sociology, giving exposure to new vocabulary that we will come across throughout the course, it also gives you an opportunity to explore sociological theories and sociologists from the very beginning of sociology. In this introduction we also have an opportunity to understand how sociological research is carried out so that the theories we study can be published and proven. This provides a strong foundation from which to launch into the main units of study outlined in the table.

Timeline of learning:

Year	Term 1	Term 2	Term 3	Term 4	Term 5	Term 6
10	Introduction to sociology		Family and households		Education	
11	Social Stratification		Crime and deviance		Exams	

What careers can this subject lead to?

Sociology is recognised as a desirable subject for anyone wishing to enter into careers such as: Teaching (All Subjects), Police, Nurse/Doctor/Midwife/Health Professional Marketing, Social Worker, Counsellor, Journalist, Lawyer, Criminologist, Psychologist, Public Relations, Human Resources, Prison Officer and University Researcher/Lecturer. Although this is not an exhaustive list and any profession in which you are required to work with others will benefit from the knowledge and understanding you will develop throughout this course.

For further details please see Mr Tucker